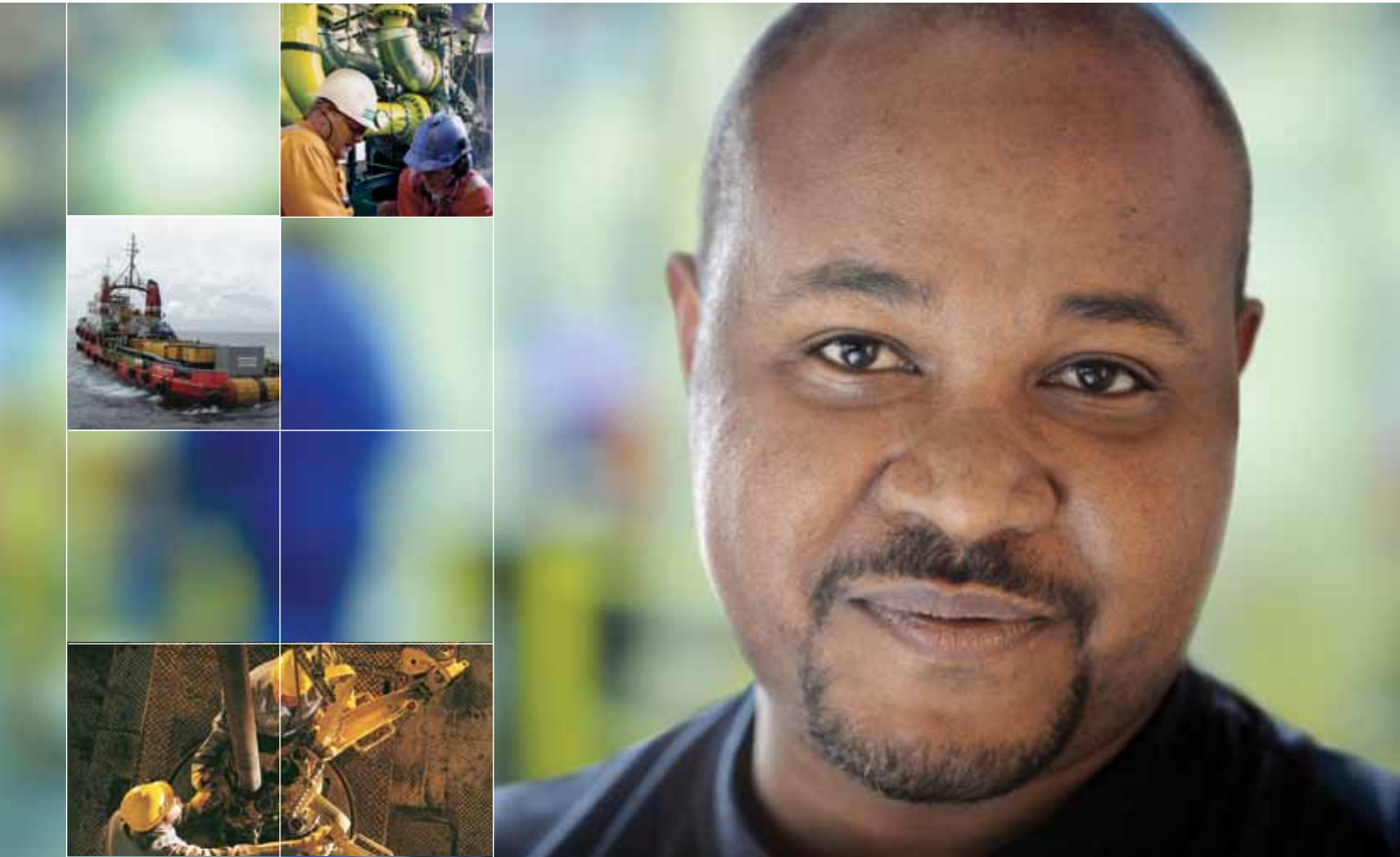
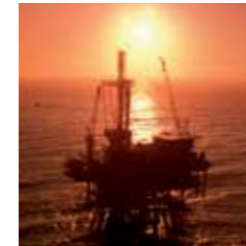


Atlas Copco Solutions
Serving the Oil and Gas Industry



Sustainable Productivity





Contents

Overview	4
Global Solutions for Sustainable Productivity Serving the Oil and Gas Industry	
Your Application	8
Exploration & Production Transportation Refinery & Petrochemical Distribution & Power Generation	
Our Parts and Service Offering	16
Driving Customer Satisfaction	
Our Products for Your Application	18

Global Solutions for Sustainable Productivity

Atlas Copco is a world leader for solutions that generate sustainable productivity in your industrial applications. Built on more than 130 years of experience and know-how, our products and services range from compressed air and gas equipment, generators, construction and mining equipment, industrial tools and assembly systems to all related parts and services, as well as industrial rental.

What sets Atlas Copco apart as a company? Most of all, it is our conviction that our own success is directly linked to the success of our customers.

This is why we always go the extra mile to provide the best possible know-how and technology to help our customers grow, produce and succeed.

There is a unique way of achieving this goal – we simply call it the Atlas Copco Way. It is based on our company values: constant innovation and interaction with our customers, and a commitment to the highest standards in safety, quality and efficiency.

These values are the foundation that continue to help us achieve sustainable productivity for our customers – and the environment – around the world.

Benefits of Working with Atlas Copco:

- World leading player in air / gas compression and purification
- More than 130 years of experience
- Presence in more than 160 markets
- Extensive global service network
- No compromises on component quality
- Highly-trained personnel
- Complete range of solutions and services

“Atlas Copco has been a world-leading provider of industrial productivity solutions for more than a century.”





Serving the Oil and Gas Industry

With a comprehensive product offering, Atlas Copco is a trusted partner to the Oil and Gas industry. We provide reliable equipment for many challenging applications along the entire Oil and Gas value chain.

We know our business – and we know yours. When we work with our customers, we have one goal in mind: sustainable productivity.

Based on our company’s early roots in drilling technology, we have built our expertise and expanded our portfolio over decades of research & development and customer

interaction. We have grown to become a premier, reliable end-to-end partner for the Oil and Gas industry.

From the well all the way to the downstream, Atlas Copco provides reliable equipment for the industry’s entire application range (see overview box).

Our unique global service presence provides local assistance for customer applications with parts and service, as well as comprehensive Customer Support Plans.

Close to the Customer

We have an established structure of Oil and Gas competence centers that can design special products in line with customer specifications.

We have experience with all relevant international standards. Our equipment is designed, manufactured and tested to comply with ISO 1217 regulations; our equipment is built with API specifications in mind.

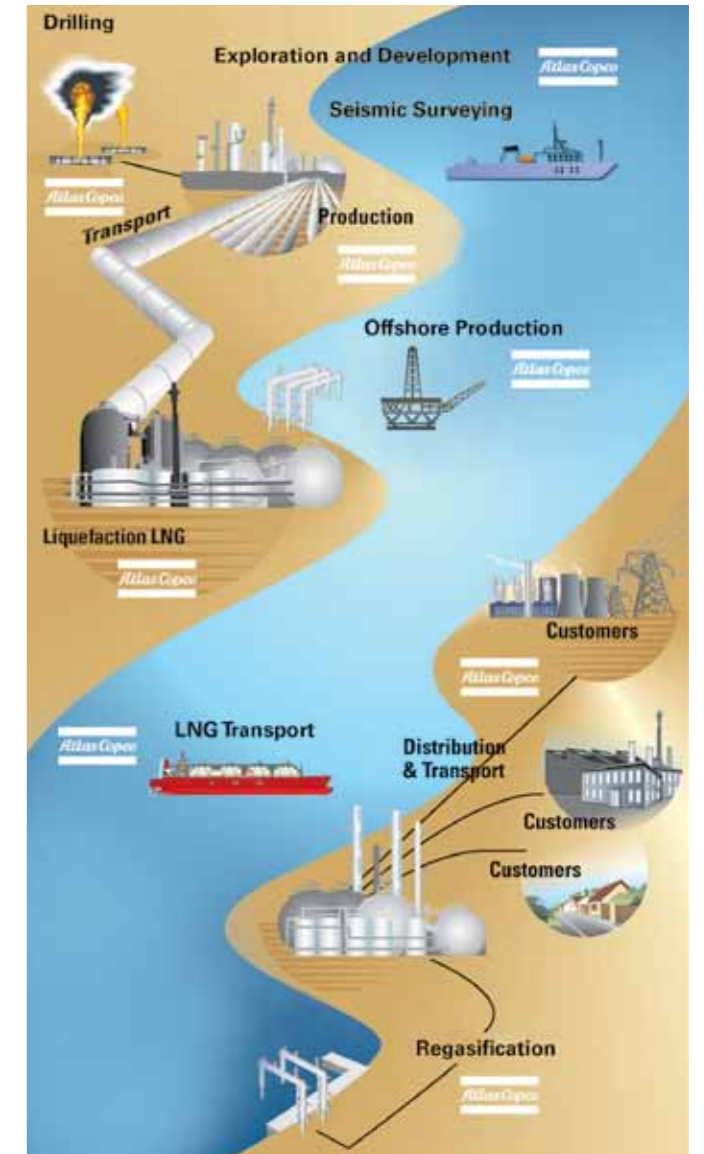
We can include DNV crashframes for offshore deployment, corrosion-proof products for marine environments, as well as ATEX-certified compressors operating in offshore areas.

Rounding out this offering are our state-of-the-art control and monitoring systems which ensure optimum performance, easier field follow-up via internet, satellite or mobile networks.

Overview: A Solution for Any Job

Atlas Copco offers the following core equipment for the Oil and Gas Industry:

- Screw compressors
- Reciprocating piston compressors
- Tooth compressors
- Seismic compound compressors
- Centrifugal air and gas compressors
- Expansion turbines
- Mobile drill rigs
- Drilling hammers
- Gas and air purification systems
- Diesel generators



From A to Z: Atlas Copco solutions are present along the natural gas value chain.

“Atlas Copco is a trusted partner to the Oil and Gas industry”



Exploration & Production

Seismic Exploration

Atlas Copco solutions help unearth what's beneath the surface: Seismic Exploration is widely viewed as the main method of exploring hydrocarbon deposits, both onshore and offshore.

Atlas Copco offers a complete range of seismic compressors, used for airgun shooting on seismic vessels around the globe.

Exploration & Production Drilling

Once geologists have identified and evaluated a prospective location, exploration drilling, and ultimately production drilling can begin.

Atlas Copco offers a comprehensive portfolio of solutions for drilling operations, such as air compressors and boosters, drill rigs, drilling tools, DTH hammers and bits.



Well Services

In the course of its lifetime, an oil or gas well will undergo different well services, such as fracturing, chemical cleaning, gas lifting, nitrogen injection, etc.

We offer the necessary high-pressure boosters, compressors and nitrogen generation systems for your process.

Gas & Oil Separation And Gas Processing

The Gas and Oil Separation Plant – also known as GOSP – is crucial to crude oil processing, both onshore and offshore.

Produced crude oil leaving the well head is both sour (contains hydrogen sulfide gas) and wet (contains liquids). It must be processed and treated to make it safe, environmentally acceptable and economically viable for use in downstream petrochemical processes.

In the realm of oil and gas processing, our gas compressors are designed to ensure highest reliability. Incorporating the latest technology, our aerodynamic designs maximize machine performance without sacrificing dependability.

For Gas & Oil Separation and Processing, Atlas Copco gas compressors and gas purification system are the best choice.

Utility Air & Instrument Air

Whether it is for a final painting job on the platform, sandblasting metal components on a ship, cleaning vessels and pipes, gas flaring or kick-starting your mechanical rotating equipment – Utility Air is always needed.

Atlas Copco provides both standard and customized instrument air skid packages for offshore and onshore installations, suitable for safe area and hazardous area classification.

The instrument air package contains compressors with dryers & filtration systems providing dry quality air for applications such as pneumatic controls/actuation of critical valves, buffer sealing gas and also for instruments.

Atlas Copco's Drilling Competence

- End-to-end solutions from exploration to production and maintenance
- Highly mobile and efficient drill rigs that save time and money
- Nitrogen generation systems for inert medium applications
- Superior DTH hammers for deeper drilling and faster penetration in any hard rock formation



The RD20 is a high production rig with capability to drill wells to depths in excess of 5,000 ft.



A moment of elation: The project is completed using Secoroc drilling equipment.



The Greenfield and Hurricane seismic compressors are used for airgun shooting on seismic vessels.



LNG Transport & BOG Handling

Whenever pipeline transport is economically unfeasible, gas can be liquefied for transport aboard vessels or tanker trucks as Liquefied Natural Gas (LNG).

Over the past three decades, Atlas Copco has built a wealth of experience in the global LNG market with a strong product suite and partnerships with key LNG players.

Our product portfolio also provides solutions for LNG processing and regasification.

To guarantee a safe process, Atlas Copco air compressors and nitrogen generation units support nitrogen blanketing with specific high flow and high-pressure requirements.

Pipeline Services

The main activities involved in preparing a pipeline for operation are filling, cleaning and gauging; later also hydro testing; dewatering and drying.

Atlas Copco offers end-to-end solutions including feed-air compressors, air filtration systems, dryers, nitrogen producing units and high-pressure boosters.

Atlas Copco's Global LNG Competence

- Technology leader in LNG market
- More than 400 compressors aboard LNG vessels
- Supplied compressors for world's first on-sea LNG liquefaction (Q-flex vessel, 216,000 m³/h capacity)
- Gas handling systems for: Steam DFDE ME – GI SSD
- Solutions for LNG vessels with or without reliquefaction

Transportation

Pipeline Transport and Instrumentation

Atlas Copco solutions move gas and oil over long distances of pipeline, from producing regions to the network of consumption points.

Gas gathering and booster stations – installed along the network of pipelines at variable distances – ensure adequate flow of product at the delivery end of the pipeline.

Reliable Instrument Air is also a must for actuation of emergency shut down valves in the pipeline transmission system.



“There are many methods of getting your Oil and Gas goods from A to B – Atlas Copco is your partner for every step along the way.”



A Comander for on-board reliquefaction of LNG.



Atlas Copco industrial rental compressors in action during pipeline pre-commissioning in deep water.



An LNG tanker.

Your Application



Your Most Reliable Partner

Fewer markets are as complex as Chemical/ Petrochemical. The industry's broad range of applications are all covered by Atlas Copco gas and air centrifugal compressors and expanders.

Applications include:

- sulphur removal
- catalyst regeneration
- process heating
- sour-water oxidation
- gasoline sweetening
- instrument air
- decoking air
- ethylen olefin
- purification
- propane dehydrogenation
- hydrogen recovery

When production gets heated, the consequence is often that entire production processes can be forced out of operation, a scenario that costs time and money.

One way to maximize your productivity is to ensure proper quality of compressed air, used to actuate instruments and control valves.



Plant turnarounds and shutdowns

Given that steady and reliable compressor air supply is crucial, you want to be prepared for the rare occasions you need a backup plan. Atlas Copco Specialty Rental proactively ensures that you are, indeed, ready.

Refinery & Petrochemical

Within the Oil and Gas industry, few other market segments rely on processes that are as demanding and complex as Refinery & Petrochemical. Continuous reliability and safe operation of equipment are key requirements in these processes.

Whether you require compressed air or other gases, Atlas Copco compression technology contributes strongly to successful and sustainable production.

A complete portfolio – employed by customers around the globe – is a testament to our pedigree and competence as a global leader in this segment.



A typical Instrument Air skid package consisting of duty and standby screw compressors with dryers and filters.

“Few segments are as demanding as Refinery & Petrochemical. Therefore, equipment reliability and operational safety are prime requirements.”



Getting Stronger

Over the past several years, Atlas Copco has further strengthened its position as a world leading provider of CNG refuelling solutions.

Atlas Copco's natural gas distribution solutions include:

- electric and gas driven compressor packages
- bare shaft compressors
- mother-daughter station systems
- metered, non-metered and trailer filling dispensers
- storage units and ancillary equipment
- full scope of related parts and service

Power Generation

The Oil and Gas industry relies strongly on a steady and reliable supply of power for its applications.

Boasting superior performance and high efficiency, Atlas Copco provides a complete range of diesel generators that keep your operation running, doing so at low noise levels and with minimum energy usage.

Natural gas driven power plants rely on Atlas Copco centrifugal gas compressors (Fuel Gas Boosters) to feed their big turbines. Those power plants generate electricity for entire cities and municipalities.



Powering your application: An Atlas Copco fuel gas booster.

Distribution & Power Generation

The final stage in the Oil and Gas value chain is the distribution to the energy market and power generation industries. Hydrocarbons can be used to produce electricity or as industrial or residential fuels.

As an environmentally clean solution, Compressed Natural Gas (CNG) has become a very popular alternative to other automobile fuels. The market for Natural Gas Vehicles (NGV) – either powered by CNG or Liquefied Natural Gas (LNG) – is growing rapidly.



End of the value chain: Gas stations.



“In close cooperation with customers and business partners, and with more than 30 years of experience, we provide complete solutions for refueling.”

Our Parts and Service Offering



Driving Customer Satisfaction

Total customer care is our top goal. Always offering professional and timely service, through interaction and involvement we adapt our offer to your specific processes, needs and objectives.

We work in close cooperation with you to optimize the efficiency of your processes.

This includes standardized genuine parts and remote monitoring and control, as well as auditing and optimization.

To us, the best way to ensure sustainable productivity in your process is by taking constant care of your equipment.

With a global reach spanning more than 160 markets, we can deliver high-quality service, in your local language, and proactively. We deliver service ahead of time.

Genuine Parts

Simply put, genuine parts offer the best value. Our genuine parts are manufactured to the same quality standards as your compressor.

This ensures that your production remains at the same maximum level – even after machine servicing.

Customer Support Plans

Through regular and thorough maintenance you can ensure the reliability of your operation and, ultimately, the quality of your compressed air.

Checks by Atlas Copco expert technicians following factory standards, minimize the risk of breakdowns and production loss.

The value of Atlas Copco support plans:

- Most cost-effective approach
- Longer life expectancy for your compressor
- Global presence, local service, never more than a phone call away
- Quality and productivity

Monitoring and Control

Keeping a close eye on your equipment at all times is the best way to prevent production losses. Gaining this inside view through our Monitoring and Control service, we can proactively plan maintenance.

Auditing and Optimization

Through an audit of your production process, we can optimize the performance of your equipment. We do that with a keen eye on maximum availability at lowest cost.

Our experts can propose strategies for better fuel efficiency and other energy optimization.

Benefits of Atlas Copco Service

Our global Service organization is set to deliver on our promise – that of highest quality service for you.

- Dedicated local support in your language
- Support around the clock
- World-class logistics
- Committed service personnel
- Complete diagnostic reports after every inspection
- Proactivity: service ahead of time



“We want to be a real performance partner for you by offering total customer care.”

Our Products For Your Application

Oil Lubricated Screw Air Compressor (portable)

XAS / XRVS / XRXS / ORV

Power: diesel, up to 656 kW / 880 HP
Inlet pressure: atmospheric
Discharge pressure: up to 35 bar / 510 psi
Flow Range: up to 63 m³/min / 2250 scfm
Applications: Ground and construction work, maintenance work, drilling, pressure testing



Oil Lubricated Screw Air Compressor ATEX Certified (Zone 2)

XAS / XRVS / XRXS

Power: diesel, up to 656 kW / 880 HP
Inlet pressure: atmospheric
Discharge pressure: up to 35 bar / 510 psi
Flow Range: up to 63 m³/min / 2,250 scfm
Applications: Platform maintenance, pipeline services, well services, gas flaring in hazardous area



Oil Free Screw Air Compressor Industrial Rental

PTS / PTE / PNS

Power: diesel / electric, up to 429 kW / 575 HP
Inlet pressure: atmospheric
Discharge pressure: up to 25 bar / 365 psi
Flow Range: up to 45 m³/min / 1,600 cfm
Applications: Process air, pipeline services, instrumentation air, plant shutdowns



Oil Free Screw Air Compressor ATEX Certified (Zone 2)

ZA / ZE / ZR / ZT / ZG

Power: electric, steam turbine, diesel, natural gas, up to 935 kW / 1,250 HP
Inlet pressure: atmospheric
Discharge pressure: up to 13 bar / 190 psi
Flow Range: up to 147 m³/min / 5,402 cfm
Applications: Instrument air, utility air, refinery & petrochemical process air



Oil Free Centrifugal Air Compressor API Process Designed

ZH / HA / H

Power: electric, steam turbine up to 2,750 kW / 3,690 HP
Inlet pressure: atmospheric
Discharge pressure: up to 13 bar / 190 psi
Flow Range: up to 450 m³/min / 16,000 cfm
Applications: instrument air, petrochemical & hydrocarbon process air



Oil Free Centrifugal Gas Compressor API Process Designed

SC / TP / GT / Compander

Power: electric, steam turbine up to 40 MW
Inlet pressure: 40 to 80 bar
Discharge pressure: up to 200 bar / 2,900 psi
Flow Range: up to 6,800 m³/min / 250,000 cfm
Applications: oxygen service, fuel gas boosting, petrochemical industry, process industry, air separation, LNG transport



Oil Lubricated Screw Air Compressor (stationary)

GA / GA+ / GR

Power: electric, up to 500 kW / 670 HP
Inlet pressure: atmospheric
Discharge pressure: up to 20 bar / 290 psi
Flow Range: up to 85 m³/min / 3,000 cfm
Applications: Instrument air, utility air, service air, process air



Oil Lubricated Screw Air Compressor Classified Area (Zone 2)

GA / GA+ / GR

Power: electric, up to 500 kW / 670 HP
Inlet pressure: atmospheric
Discharge pressure: up to 20 bar / 290 psi
Flow Range: up to 85 m³/min / 3,000 cfm
Applications: Instrument air, utility air, service air, process air in hazardous areas



Oil Free Screw Air Compressor

ZA / ZE / ZR / ZT / ZG / ZS

Power: electric, steam turbine, diesel, natural gas, up to 935 kW / 1,250 HP
Inlet pressure: atmospheric
Discharge pressure: up to 13 bar / 190 psi
Flow Range: up to 147 m³/min / 5,402 cfm
Applications: Instrument air, utility air, refinery & petrochemical process air



Oil Free Centrifugal Gas Expander API Process Designed

EC / EG

Power: power recovery up to 25,000 kW / 33,500 HP
Inlet pressure: up to 110 bar / 1,600 psi
Discharge pressure: atmospheric
Flow Range: up to 710,000 kg/hr / 1,560,000 lb/hr
Applications: cryogenic and natural gas service, LNG, energy recovery, air separation, hydrocarbon service



Oil Lubricated Piston Air/Nitrogen Booster

Hurricane B Greenfield CU, CT

Power: electric, diesel, up to 522 kW / 700 HP
Inlet pressure: 24 bar / 350 psi
Discharge pressure: up to 345 bar / 5,000 psi
Flow Range: up to 128 m³/min / 4,500 cfm
Applications: deep hole drilling, pipeline services, pressure testing, well services



Oil Lubricated Piston Air/Nitrogen Booster ATEX Certified (Zone 2)

Hurricane B Greenfield CU, CT

Power: electric, diesel, up to 522 kW / 700 HP
Inlet pressure: 24 bar / 350 psi
Discharge pressure: up to 345 bar / 5,000 psi
Flow Range: up to 128 m³/min / 4,500 cfm
Applications: deep hole drilling, pipeline services, pressure testing, well services in hazardous areas



Our Products For Your Application

Oil Lubricated Compound Air Compressor (screw + piston)

**Hurricane SB / SBM
Greenfield CU / CT - GA**

Power: electric, diesel, up to 522 kW / 700 HP

Inlet pressure: atmospheric

Discharge pressure: up to 206 bar / 3,000 psi

Flow Range: up to 28 m³/min / 1,000 cfm

Applications: offshore seismic surveying



Instrument Air Packages API Process Designed

Custom Designed

Power: electric, steam turbine, diesel, natural gas, up to 2,000 kW / 2,750 HP

Inlet pressure: atmospheric

Discharge pressure: up to 13 bar / 190 psi

Flow Range: up to 250 m³/min / 10,000 cfm

Applications: instrument air, utility air, breathing air, feed air for inert gas separation



Oil Lubricated Piston Air Compressor

**LE / LT
Greenfield CS / CN / CU / CT**

Power: electric, up to 200 kW / 270 HP

Inlet pressure: up to 19 bar

Discharge pressure: up to 500 bar / 7250 psi

Flow Range: up to 28 m³/min / 1000 cfm

Applications: starting air, service air, offshore seismic surveying, utility air



Filtration and Purification Systems

Nitrogen generation units

Type: Membrane or pressure swing adsorption (PSA) technology

Specifications: flow up to 85 m³/min / 3,000 cfm nitrogen purity up to 99,99%

Inlet pressure: max 24 bar / 350 psi



Filtration and Purification Systems

Gas dehydration and purification units CDE / BDE / XDE / FDE

Type: desiccant, membrane and refrigerant type dryers / purification units for air H₂, N₂, O₂, CO₂, CH₄, CNG, etc.

Specifications: flow up to 100,000 m³/h, dewpoint down to -100°C / -148°F

Inlet pressure: up to 200 bar / 3,000 psi



Diesel Generators

QAX / QAS / QAC

Voltage: up to 480 V

Frequency: 50 Hz / 60 Hz

Power: prime power up to 1,000 kW @ 50Hz, prime power up to 1,120 kW @ 60Hz

Applications: power generation



Oil Free Piston Air/Gas Compressor API Process Designed

**P / HN / HX / LF
Greenfield DM**

Power: electric, up to 560 kW / 730 HP

Inlet pressure: up to 40 bar / 580 psi

Discharge pressure: up to 450 bar / 6,500 psi

Flow Range: up to 67 m³/min / 2400 cfm

Applications: gas processing, gas treatment, instrument air, petrochemical & hydrocarbon processing, CNG, nitrogen boosters



Oil Lubricated Piston Gas Compressor

**Greenfield CS / CN / CU / CT,
Intermech FBR / BBR**

Power: electric or gas, up to 450 kW / 600 HP

Inlet pressure: up to 30 bar / 435 psi

Discharge pressure: up to 500 bar / 7,250 psi

Flow Range: up to 28 m³/min / 1,000 cfm

Applications: Natural Gas compression, CNG refueling stations



Filtration and Purification Systems

**Air filters DD / PD / QD
Air dryers FD / BD / CD / MD / ND**

Type: particulate, coalescing or active carbon filters / refrigeration, adsorption, membrane or desiccant dryers

Specifications: Oil content down to 0.003mg/m³

Dewpoint down to -70°C / -94°F

Inlet pressure: max 35 bar / 510 psi



Oil & Gas Rigs

RD 20

Pull down: 30,000 lbf / 133.4 kN

Pull back (hook load): 120,000 lbf / 533.7 kN

Rotary torque: speed 0-120 RPM: 8,000 lbf-ft / 10.8 kNm

Power: 560 kW / 755 HP

Drilling technique: hydraulic top drive, rotary mud/air, down the hole (DTH) drilling

Nominal depth: down to 5,000 ft

Applications: oil & gas drilling, coal bed methane drilling, setting surface casing



Oil & Gas Rigs

PREDATOR

Pull down: 50,000 lbf / 222.4 kN

Pull back (hook load): 200,000 lbf / 889.6 kN

Rotary torque: - speed 0-90 RPM: 30,000 lbf-ft / 40.6 kNm - speed 0-180 RPM: 15,000 lbf-ft / 20.3 kNm

Power: 708 kW / 950 HP

Drilling technique: hydraulic top drive, rotary mud/air, down the hole (DTH) drilling

Nominal depth: down to 8,000 ft

Applications: oil & gas drilling, coal bed methane drilling, setting surface casing



Drilling Hammers and Bits

Secoroc QL / TD / Fusion / COP

Hole diameter: hole range up to 36 inches / 0.91 m

Pressure: up to 30 bar / 435 psi

Applications: oil & gas drilling, coal bed methane drilling, water well drilling, open pit mining, foundation work



Application Matrix

Technology	Oil Lubricated Screw Compressor		Oil Free Screw Compressor		Oil Free Centrifugal Compressor		Oil Free Centrifugal Expander	Oil Lubricated Piston Compressor			Oil Free Scroll Compressor	Oil Free Piston Compressor		Filtration and Purification Systems			Diesel Generators	Mobile Drill Rigs	Drilling Hammers and Bits
	Air		Air		Air	Gas	Gas	Air / Nitrogen	Air	Gas	Air	Air	Gas	Air Dryers and Filters	Nitrogen Generation	Gas Purification	Electricity Generation	Air	Air
Drive	Diesel	Electric	Diesel	Electric	Electric, Steam	Electric, Steam		Diesel, Electric	Electric	Electric, Gas	Electric	Electric	Electric				Diesel	Diesel	Pneumatic
Upstream																			
Onshore Seismic Exploration	●																	●	●
Offshore Seismic Exploration								●	●										
Underbalanced Drilling	●		●					●							●			●	●
Pipeline pre-commissioning	●		●					●					●	●					
Pipeline Service	●		●					●					●	●					
Well Service (coil tubing)	●		●					●						●					
Gas Injection for Oil Recovery						●		●		●		●		●	●				
Gas Processing					●	●	●			●		●			●				
Gas Treatment					●	●	●			●		●			●				
Liquefied Petroleum Gas (LPG)					●	●	●								●				
Gas Flaring	●	●	●	●					●		●				●				
Power Generation									●								●		
Utility Air	●	●	●	●	●				●			●							
Instrument Air	●	●	●	●	●			●	●		●	●							
Breathing Air			●	●					●		●								
Starting Air								●	●										
Nitrogen Generation	●	●	●	●			●	●					●	●					
Fire Suppression System	●		●	●									●	●					
Midstream																			
Gas Gathering Station					●	●	●			●		●							
LNG Liquefaction					●	●									●				
LNG Transportation					●	●									●				
LNG Regasification							●								●				
Gas Storage		●		●	●	●	●			●		●			●				
Gas Pipeline					●	●	●			●		●			●				
Pipeline Service	●	●	●	●				●		●		●		●					
Power Generation									●								●		
Utility Air	●	●	●	●	●				●			●							
Instrument Air	●	●	●	●	●				●		●	●							
Process Air	●	●	●	●	●				●										
Inert Gas Blanketing	●	●	●	●			●					●		●					
Downstream																			
Petrochemical		●		●	●	●			●	●		●	●	●		●			
Aromatics		●		●	●	●	●		●	●		●	●	●		●			
Inorganics		●		●	●	●	●		●	●		●	●	●		●			
Refineries		●		●	●	●	●		●	●		●	●	●		●			
Gas to Liquid		●		●	●	●	●		●	●		●	●	●		●			
Power Generation (FGB)						●	●										●		
Energy Recovery							●												
Utility Air	●	●	●	●	●				●			●							
Instrument Air	●	●	●	●	●				●		●	●							
Gas Flaring	●	●	●	●		●			●										
CNG Dispensing Station										●						●			